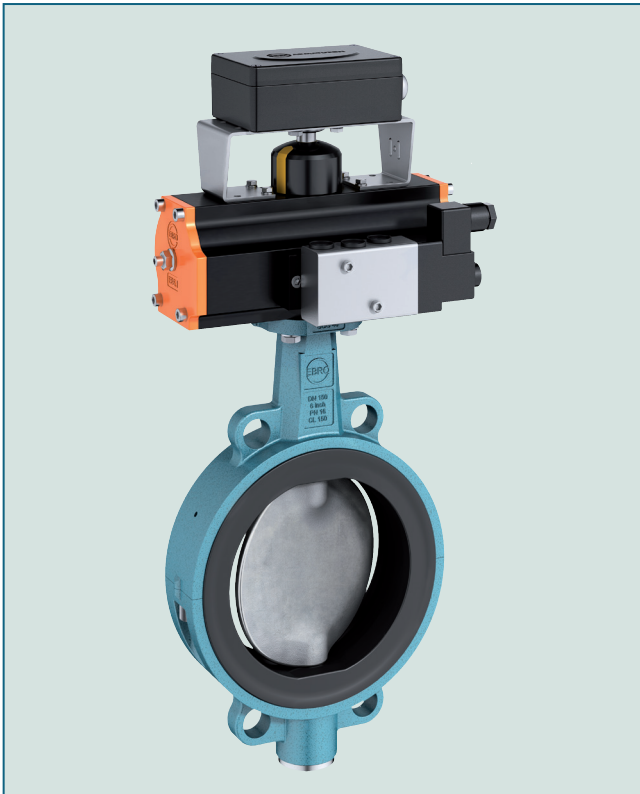


WAFER TYPE BUTTERFLY VALVE Z 611-A



Resilient seated wafer type butterfly valve for semi-corrosive media.

TECHNICAL DATA

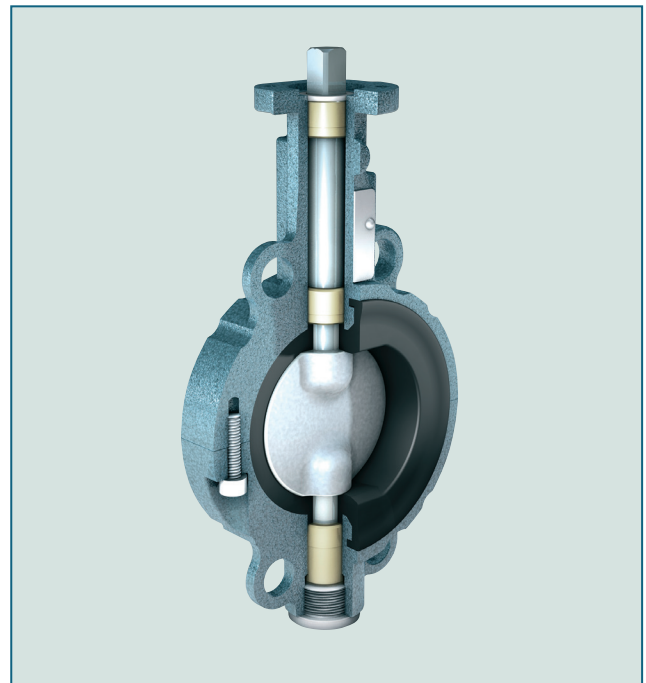
Nominal diameter:	2 inch - 12 inch
Face-to-face:	EN 558 Series 20 ISO 5752 Series 20 API 609 Table 1
Flange accommodation:	EN 1092 PN 10/16 ASME Class 150
Flange surface design:	EN 1092 Form A/B ASME RF, FF
Top flange:	EN ISO 5211
Marking:	EN 19
Tightness check:	DIN EN 12266 (Leakage rate A) ISO 5208, Category 3
Temperature range:	+14°F to +320°F (depending on pressure, medium and material)
Operating pressure:	max. 145 psi

FEATURES

- One piece disc/shaft
- Split body with stainless steel screws
- Insulation height as per plant regulations
- Optional: Special design RWTÜV certified to TA-Air/ VDI 2440
- Triple shaft bearing
- Disc's sealing surface mirror polished
- Materials complying with FDA standards available
- Can be disassembled, material-specific recycling possible

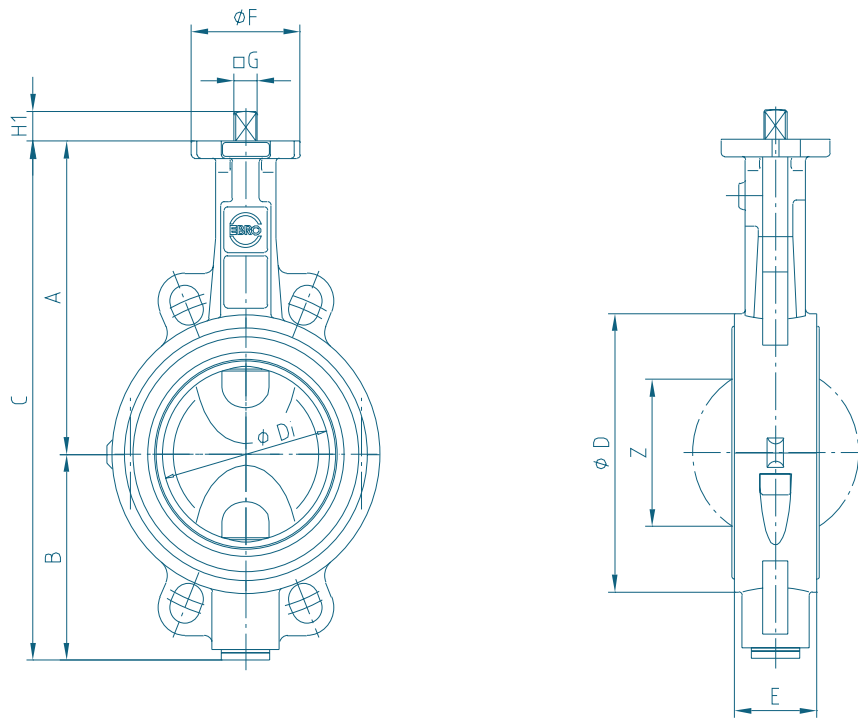
GENERAL APPLICATIONS

- Food and beverage industry
- Purification plants
- Pharmaceutical industry
- Chemical and petrochemical industry
- Water and waste water industry
- Pneumatic materials handling technology
- Shipbuilding
- Power plants
- Civil engineering
- For paint and lacquers a silicone-free version is available



The split body design allows quick and easy maintenance.

WAFER TYPE BUTTERFLY VALVE Z 611-A



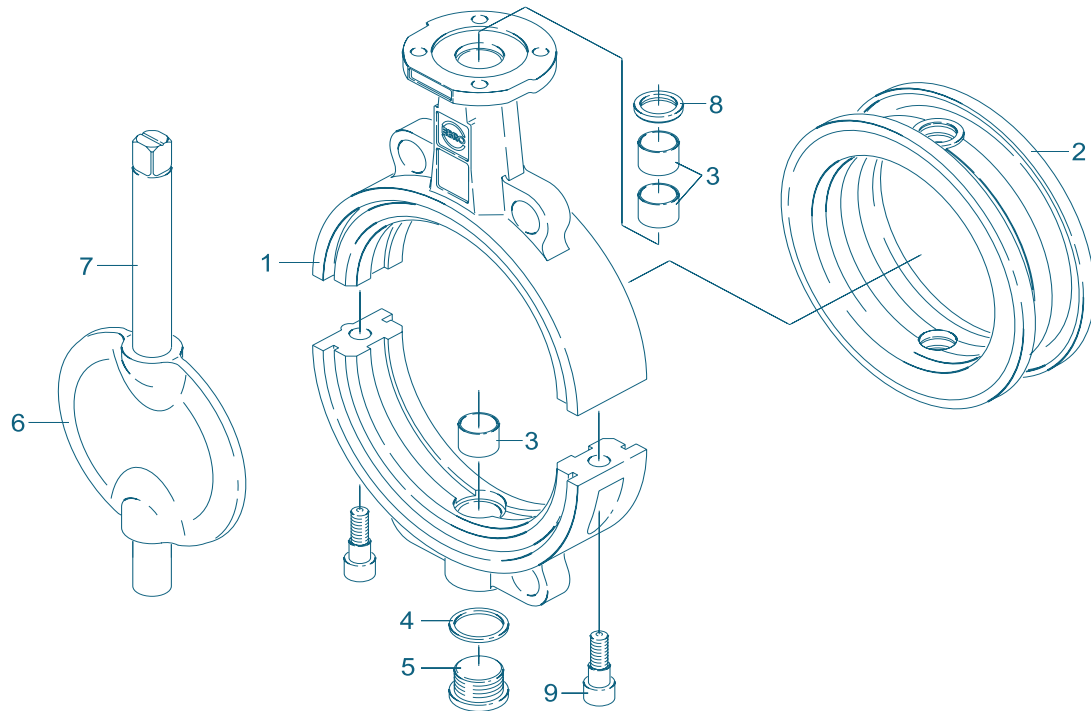
Z 611-A with bare shafts end acc. to EN ISO 5211

DN [mm]	Size [in]	Dimensions [in]												Weight [lb]
		A	B	C	D	Di	E	F	Flange	G	H1	H2	Z	
50	2	4.96	3.31	8.27	4.41	1.93	1.69	2.13	F04	0.43	0.53	0.75	0.98	4.90
65	2½	5.28	3.66	8.94	4.72	2.52	1.81	2.13	F04	0.43	0.53	0.75	1.77	6.40
80	3	6.18	4.09	10.28	5.43	3.11	1.81	2.56	F05	0.55	0.67	0.98	2.52	8.80
100	4	6.57	4.53	11.10	6.30	3.90	2.05	2.56	F05	0.55	0.67	0.98	3.31	11.50
125	5	7.09	5.00	12.09	7.48	4.88	2.20	2.56	F05	0.55	0.67	0.98	4.33	15.20
150	6	7.99	5.91	13.90	8.46	5.87	2.20	3.46	F07	0.67	0.79	1.18	5.43	20.90
200	8	8.98	6.93	15.91	10.59	7.83	2.36	3.46	F07	0.67	0.79	1.18	7.44	29.10
250	10	10.47	8.35	18.82	12.76	9.80	2.68	4.92	F10	0.87	0.93	1.54	9.41	49.60
300	12	11.46	9.33	20.79	14.72	11.69	3.07	4.92	F10	0.87	0.93	1.54	11.26	69.40

Subject to change without notice

WAFER TYPE BUTTERFLY VALVE Z 611-A

MATERIAL SPECIFICATION AND PARTS LIST



Pt.	Description	Material	Material No.	ASTM	Pt.	Description	Material	Material No.	ASTM
1	Body				5	Plug screw DIN 908			
	Nodular cast iron	EN-JS 1030	GGG 40	60-40-18		Stainless Steel	G-X5CrNiMo19-11-2	1.4408	CF8M
2	Seat				6/7	Shaft/Disc one piece			
	NBR	Acrylonitrile butadiene rubber				Stainless Steel	G-X2CrNiMoN26-7-4	1.4469	A 995
	EPDM	Ethylene propylene caoutchouc			8	Wiper ring			
	CSM	Chlorsulphonated polyethylene				PTFE	Polytetrafluorethylene	PTFE	PTFE
	FPM	Fluorocarbon caoutchouc			9	Screw			
	VSI	Silicone rubber				Stainless Steel	A4-70	1.4401	B8M
	AU	Polyurethane elastomer							
3	Bearing bush								
	Brass	MS 58	2.0401	B 45					
4	Seal DIN 7603								
	Copper	Cu		Copper					

Above-mentioned materials of the basic version, other materials upon request

Subject to change without notice

WAFER TYPE BUTTERFLY VALVE Z 611-A

TORQUE [lb-ins]

- The torque values specified (Md) are based on liquid and lubricant media

- Powdery (non-lubricant) media Md x 1,3

- Dry gases/high viscous media Md x 1,2

- The values specified are based on the initial breakaway torque

- Dynamic torque specification available upon request

Regarding the dimensioning of actuators, please contact our engineers.

DN [mm]	50	65	80	100	125	150	200	250	300
Size [in]	2	2½	3	4	5	6	8	10	12
Md	62	133	159	248	398	974	1239	1770	2478

K_V-VALUES

- The K_V-value [US Gallon per minute] is the flow of water at a temperature of 41°F to 86°F at Δp of 15 psi

- The K_V-values specified are based on tests carried out by the Delfter Hydraulics Laboratories, the Netherlands

- Permissible velocity of flow
V_{max} 4,5 m/s for liquids,
V_{max} 70 m/s for gases

- The throttle function is linear at an angle 30° to 70°

- Avoid cavitation

For further values, please contact our engineers.

DN [mm]	Size [in]	Opening angle α°							
		20°	30°	40°	50°	60°	70°	80°	90°
50	2	5	35	57	97	167	220	286	374
65	2½	9	40	97	185	339	506	748	947
80	3	35	106	220	418	660	1057	1453	1849
100	4	57	123	286	572	793	1497	2422	3522
125	5	114	286	572	1013	1541	2334	3830	4447
150	6	154	396	881	1585	2818	3963	5944	9246
200	8	189	793	1541	2554	4403	7045	13209	17611
250	10	550	1585	2906	4843	7925	13649	23335	28178
300	12	881	2422	4403	7045	11447	22014	33022	37424

Subject to change without notice